

Summary of MYDAUS/YTS 2008 Results
for
DHHS Region 6: Penquis

Prepared
By



for
The Maine Center for Disease Control and Prevention
and
The Office of Substance Abuse,
Bureau of Health and Human Services

October, 2008

TABLE OF CONTENTS

	Page
Understanding the Data.....	i
Student Participation by Grade as Percent of Enrollment	1
Summary of Substance Use	2
Substance Use by Grade	
Alcohol – Prior 30-Day Use	3
Cigarettes – Prior 30-Day Use	4
Marijuana – Prior 30-Day Use.....	5
Binge Drinking – During Prior 2 Weeks	6
Prescription Drugs – Ever Used.....	7
Inhalants – Ever Used.....	8
Stimulants – Ever Used.....	9
Substance Use Trends – 2000 - 2008	
Alcohol – Prior 30-Day Use	10
Cigarettes – Prior 30-Day Use	11
Marijuana – Prior 30-Day Use.....	12
Binge Drinking – During Prior 2 Weeks	13
Prescription Drugs – Ever Used.....	14
Inhalants – Ever Used.....	15
Stimulants – Ever Used.....	16
Prohibitive Behaviors – Prevalence during Prior Year.....	17
Pro-Social Behaviors - Prevalence during Prior Year	18
Students Feeling Unsafe at School – Prevalence by Grade	19
Risk and Protective Factors	
Grade 6: Risk Factors.....	20
Grade 6: Protective Factors.....	21
Grade 8: Risk Factors.....	22
Grade 8: Protective Factors.....	23
Grade 10: Risk Factors.....	24
Grade 10: Protective Factors.....	25
Grade 12: Risk Factors.....	26
Grade 12: Protective Factors.....	27

UNDERSTANDING THE DATA

Student Confidentiality

To protect student confidentiality, individual reports have not been generated for schools when fewer than 20 students participated in the MYDAUS/YTS. When fewer than 20 students in any one grade participated, the data for that grade was not reported. **Note: Table rows will be shaded in gray to identify grades where less than 20 students participated.**

Confidence Intervals

In the graphs on the following pages, the data labeled “%” is the weighted* proportion of students responding in a specific way to a question; for instance, 29.0% of Maine’s middle and high school students said they had consumed alcohol at least once in the 30 days prior to taking the MYDAUS/YTS. However, because not all of the eligible students answered that question (or even took the survey), we have to determine statistically how well the response of the participating students might represent the response of all the eligible students in the population (in our example, the population is the State of Maine). We did this by calculating the **95% Confidence Interval (CI)**, meaning that if all the eligible students in the population answered the question, we are 95% confident that their response would lie between the **Lower Confidence Limit (LCL)** and the **Upper Confidence Limit (UCL)**. The higher the proportion of eligible students in the population answering the survey question, the narrower the confidence interval and the more confidence we have that the results represent the experience of the student population as a whole. **Therefore, the higher the participation rate at your school and district, the more confidence you can have in those results.**

Comparing Local Data to Maine’s: Is the Difference Statistically Significant?

If the confidence interval around the local students’ response does not overlap the confidence interval around Maine’s response, then the local response is considered to be **Significantly Different** from Maine’s. If the local results are significantly lower, you will find a minus (-) under “Sig Diff”, and if the local results are higher, you will find a plus (+). **Please note that in many instances Maine's substance use has been higher than national rates, so you need to decide if “lower than Maine” is good enough.**

***Weighting the Data**

The students who participate in the MYDAUS/YTS may not represent all the eligible students in the population, relative to age and gender. Because grade and gender are known to influence results, we correct for under-representation by **weighting the data**. For example, say there were 200 students at your high school and 100 were male and 100 were female; all 100 female students took the survey but only 50 of the male students participated. We would then give each female’s response a weight of 1 and each male’s response a weight of 2. The actual weighting of the MYDAUS/YTS data is considerably more complex, and is discussed in the MYDAUS 2008 Technical Report, Appendix A - Methodology, Method of Weighting (<http://www.maine.gov/dhhs/osa/data/mydaus/mydaus2008.htm>).

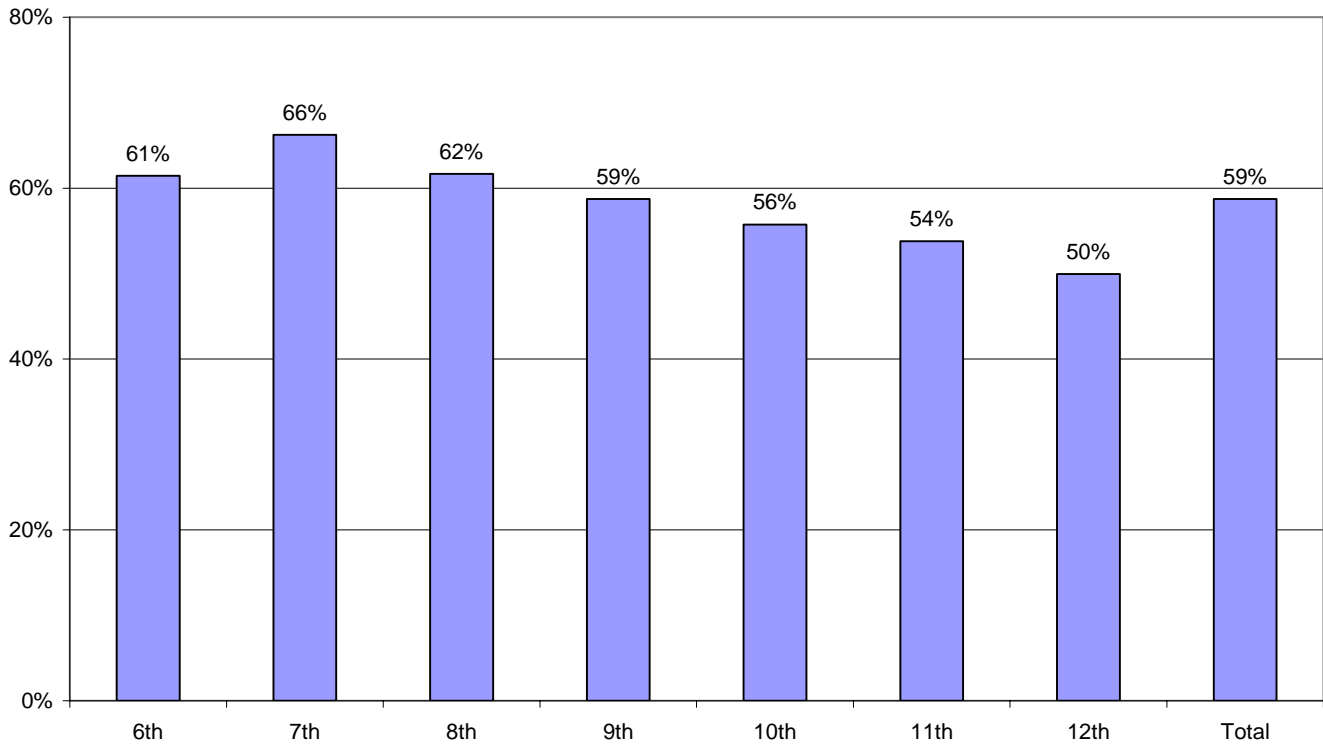
Additional Information

You can find additional reports (in the original 64-report format) by going to the MYDAUS website home page (www.maine.gov/maineosa/survey/home.php) and clicking on the appropriate map (state, school, etc.) You can also access the **results for each of the questions** on the survey by clicking on the “pie chart” icon under the maps, and then choosing the desired category and question. Tips on how to use the data can be found in, The MYDAUS/YTS Guide: Using Your Data to Build Support for Prevention: (<http://www.maine.gov/dhhs/osa/pubs/data/2007/HowToBro4.pdf>).

Screening Out Unusable Surveys

There were several questions in the MYDAUS/YTS that were used to detect surveys that were answered untruthfully (usually 3-4% of the total). These surveys were not included in the data available on the MYDAUS website.

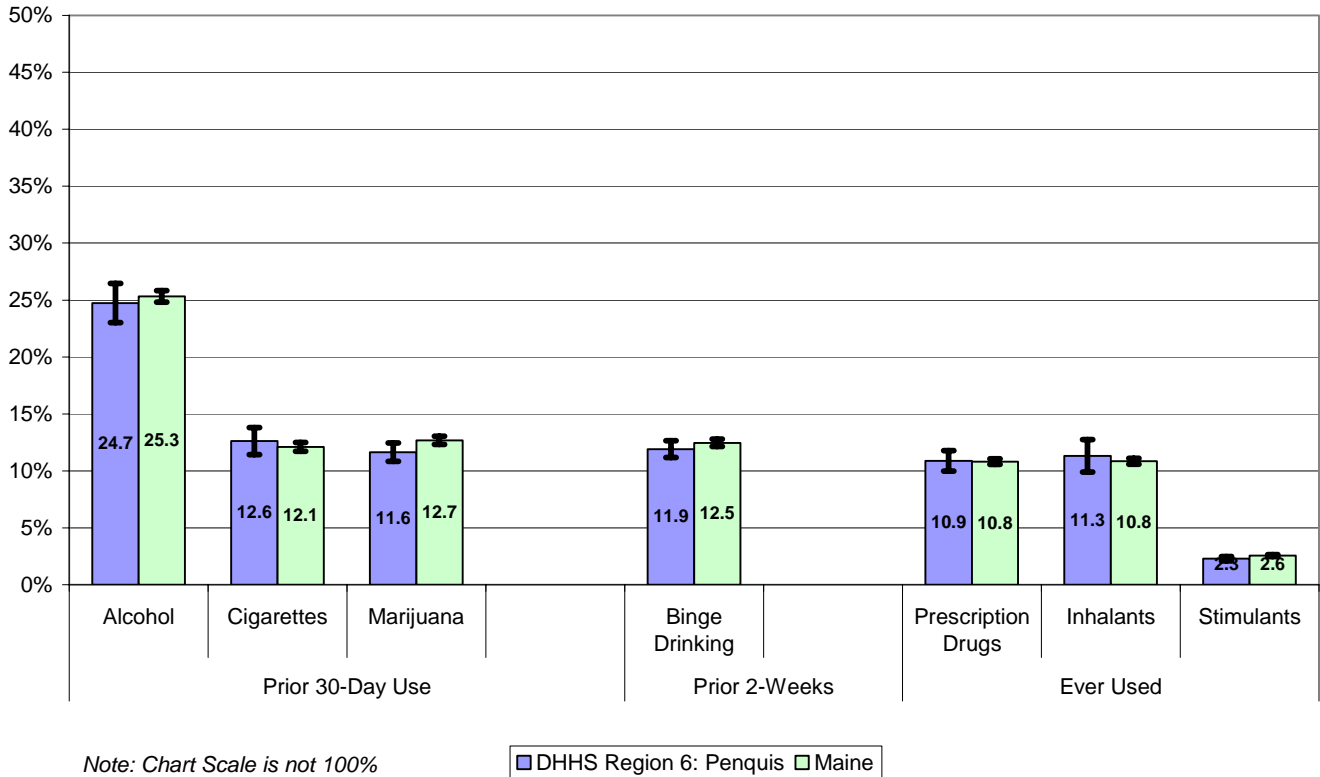
**Participation by Grade as Percentage of Enrollment
DHHS Region 6: Penquis, 2008**



**Participation by Grade as Percentage of Enrollment
DHHS Region 6: Penquis, 2008**

	6 th	7 th	8 th	9 th	10 th	11 th	12 th	Total
Number Enrolled	1800	1804	1888	2151	2167	2170	2179	14159
Number Participating	1106	1195	1164	1263	1208	1167	1088	8317
Percent Participating	61%	66%	62%	59%	56%	54%	50%	59%

**Summary of SUBSTANCE USE
DHHS Region 6: Penquis vs Maine, Grades 6 - 12, 2008**



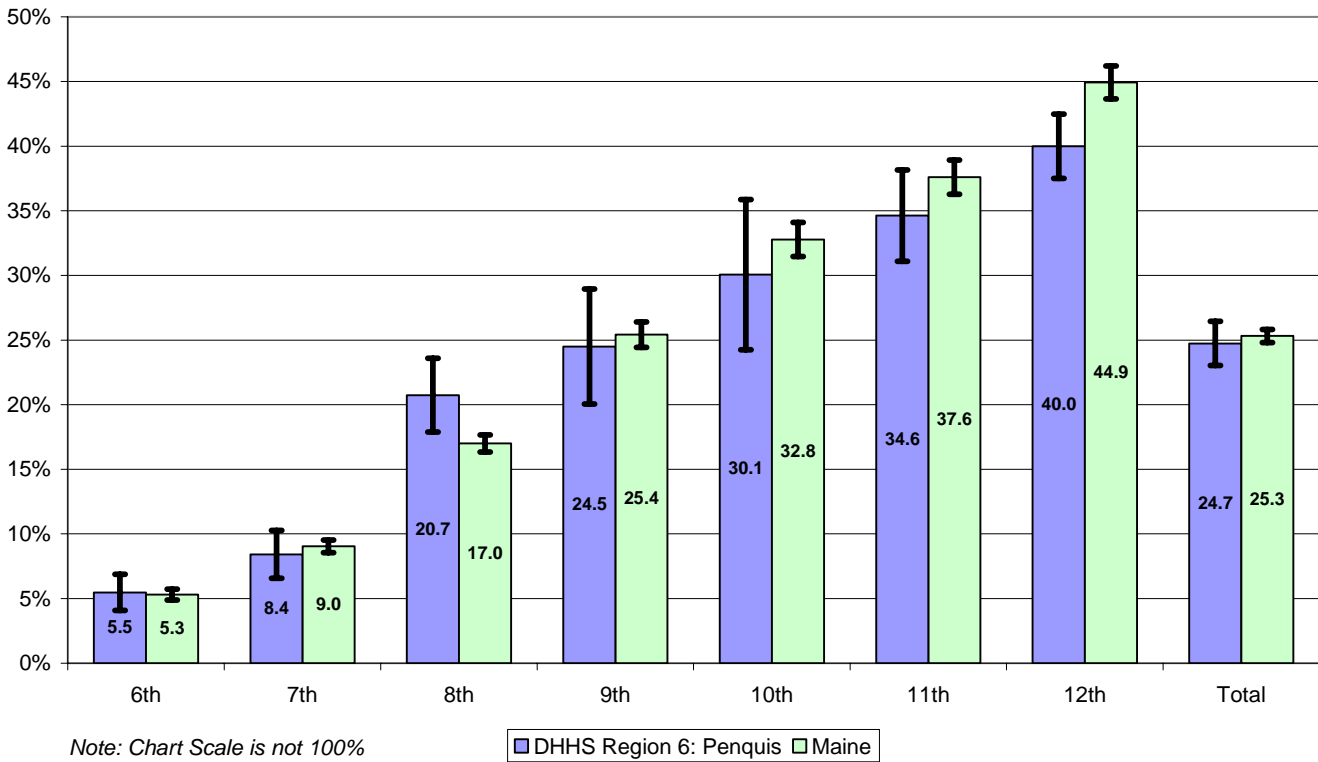
**Summary of SUBSTANCE USE
DHHS Region 6: Penquis vs Maine, Grades 6-12, 2008**

		DHHS Region 6: Penquis			Maine			Sig Diff
		LCL	%	UCL	LCL	%	UCL	
Prior 30-Day Use	Alcohol	23.0%	24.7%	26.5%	24.8%	25.3%	25.8%	
	Cigarettes	11.4%	12.6%	13.8%	11.7%	12.1%	12.5%	
	Marijuana	10.8%	11.6%	12.4%	12.3%	12.7%	13.0%	
Prior 2-Weeks	Binge Drinking	11.2%	11.9%	12.6%	12.1%	12.5%	12.8%	
Ever Used	Prescription Drugs	10.0%	10.9%	11.8%	10.6%	10.8%	11.1%	
	Inhalants	9.9%	11.3%	12.7%	10.6%	10.8%	11.1%	
	Stimulants	2.1%	2.3%	2.5%	2.5%	2.6%	2.7%	

LCL: 95% Lower confidence limit. UCL: 95% Upper confidence limit.

Sig Diff: Significant difference at 95% confidence, where plus (+) is higher and minus (-) is lower.

**ALCOHOL - Prior 30-Day Use
DHHS Region 6: Penquis vs Maine, by Grade, 2008**

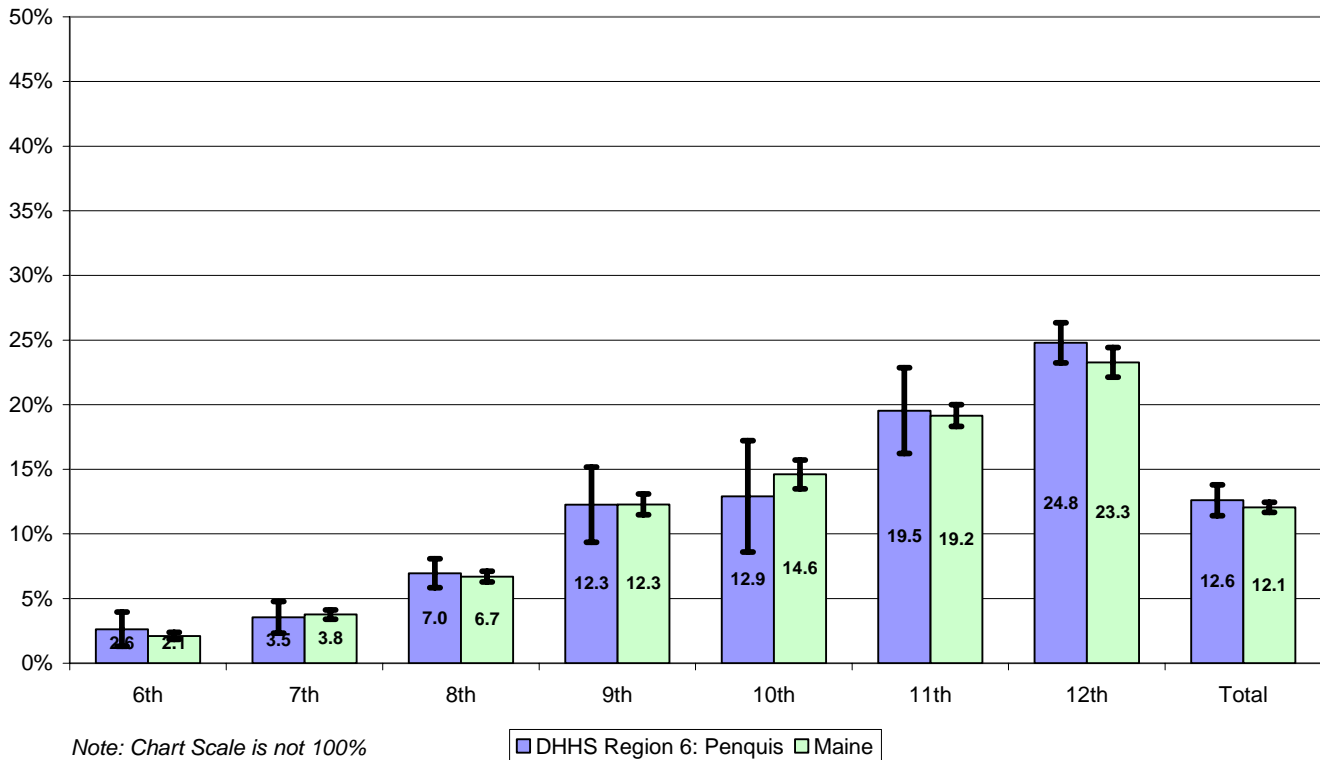


**ALCOHOL - Prior 30-Day Use
DHHS Region 6: Penquis vs Maine, by Grade, 2008**

Grade	DHHS Region 6: Penquis			Maine			Sig Diff
	LCL	%	UCL	LCL	%	UCL	
6th	4.1%	5.5%	6.9%	4.9%	5.3%	5.7%	
7th	6.6%	8.4%	10.3%	8.5%	9.0%	9.5%	
8th	17.9%	20.7%	23.6%	16.3%	17.0%	17.7%	+
9th	20.0%	24.5%	28.9%	24.4%	25.4%	26.4%	
10th	24.3%	30.1%	35.9%	31.5%	32.8%	34.1%	
11th	31.1%	34.6%	38.2%	36.3%	37.6%	38.9%	
12th	37.5%	40.0%	42.5%	43.7%	44.9%	46.2%	-
Total	23.0%	24.7%	26.5%	24.8%	25.3%	25.8%	

*LCL: 95% Lower confidence limit. UCL: 95% Upper confidence limit.
Sig Diff: Significant difference at 95% confidence, where plus (+) is higher and minus (-) is lower.*

**CIGARETTES - Prior 30-Day Use
DHHS Region 6: Penquis vs Maine, by Grade, 2008**



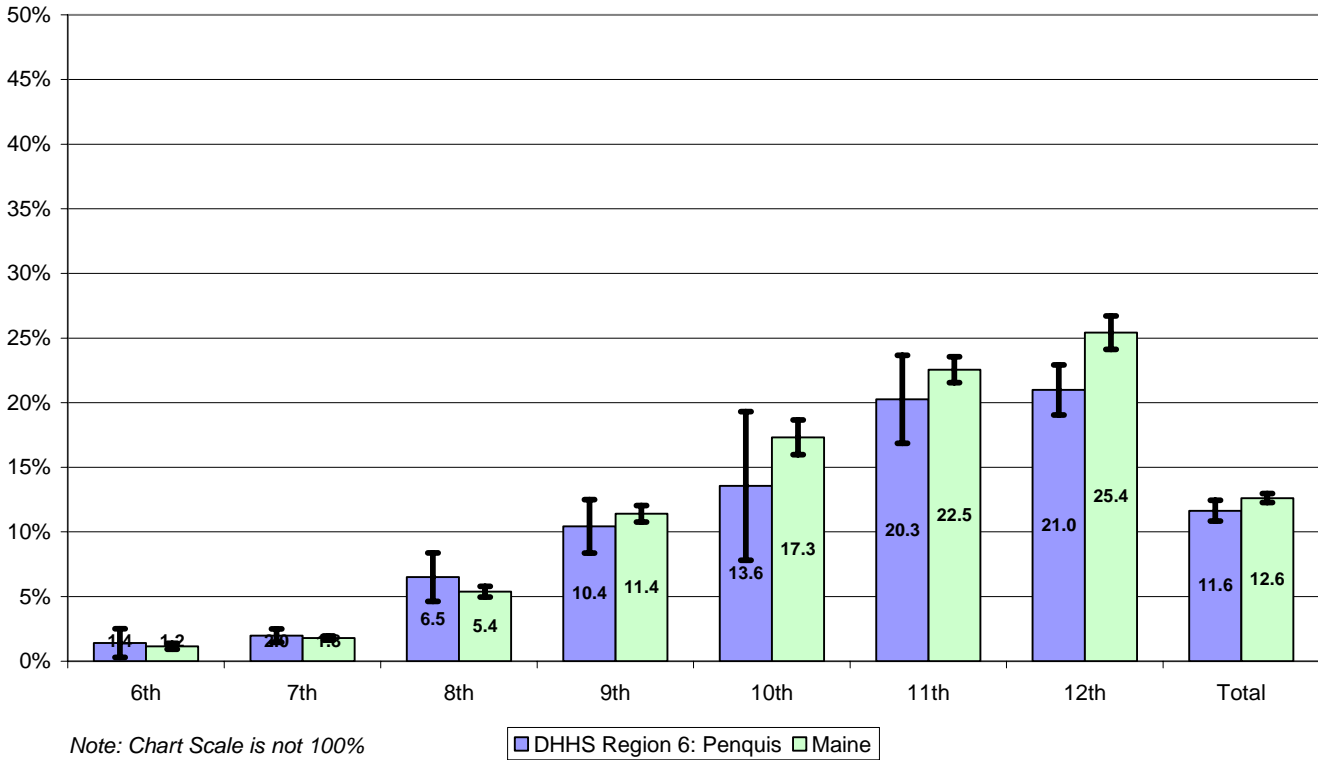
**CIGARETTES - Prior 30-Day Use
DHHS Region 6: Penquis vs Maine, by Grade, 2008**

Grade	DHHS Region 6: Penquis			Maine			Sig Diff
	LCL	%	UCL	LCL	%	UCL	
6th	1.3%	2.6%	4.0%	1.8%	2.1%	2.4%	
7th	2.3%	3.5%	4.8%	3.4%	3.8%	4.1%	
8th	5.8%	7.0%	8.1%	6.3%	6.7%	7.1%	
9th	9.4%	12.3%	15.2%	11.5%	12.3%	13.1%	
10th	8.6%	12.9%	17.2%	13.5%	14.6%	15.7%	
11th	16.2%	19.5%	22.9%	18.3%	19.2%	20.0%	
12th	23.2%	24.8%	26.3%	22.1%	23.3%	24.4%	
Total	11.4%	12.6%	13.8%	11.7%	12.1%	12.4%	

LCL: 95% Lower confidence limit. UCL: 95% Upper confidence limit.

Sig Diff: Significant difference at 95% confidence, where plus (+) is higher and minus (-) is lower.

**MARIJUANA - Prior 30-Day Use
DHHS Region 6: Penquis vs Maine, by Grade, 2008**



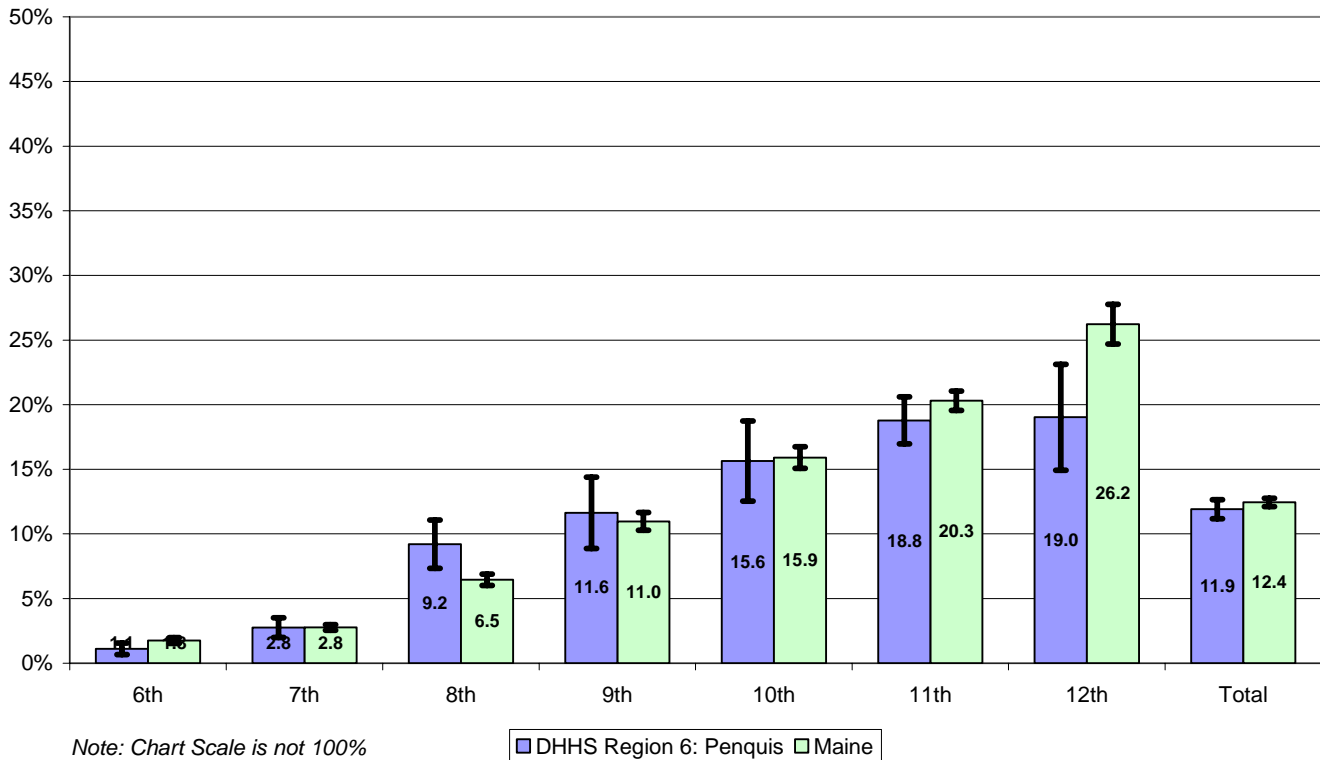
**MARIJUANA - Prior 30-Day Use
DHHS Region 6: Penquis vs Maine, by Grade, 2008**

Grade	DHHS Region 6: Penquis			Maine			Sig Diff
	LCL	%	UCL	LCL	%	UCL	
6th	0.3%	1.4%	2.5%	0.9%	1.2%	1.4%	
7th	1.5%	2.0%	2.5%	1.6%	1.8%	2.0%	
8th	4.6%	6.5%	8.4%	5.0%	5.4%	5.8%	
9th	8.4%	10.4%	12.5%	10.8%	11.4%	12.0%	
10th	7.8%	13.6%	19.3%	16.0%	17.3%	18.7%	
11th	16.8%	20.3%	23.7%	21.5%	22.5%	23.6%	
12th	19.0%	21.0%	22.9%	24.1%	25.4%	26.7%	-
Total	10.8%	11.6%	12.4%	12.3%	12.6%	13.0%	

LCL: 95% Lower confidence limit. UCL: 95% Upper confidence limit.

Sig Diff: Significant difference at 95% confidence, where plus (+) is higher and minus (-) is lower.

BINGE DRINKING - Prior 2 Weeks
DHHS Region 6: Penquis vs Maine, by Grade, 2008



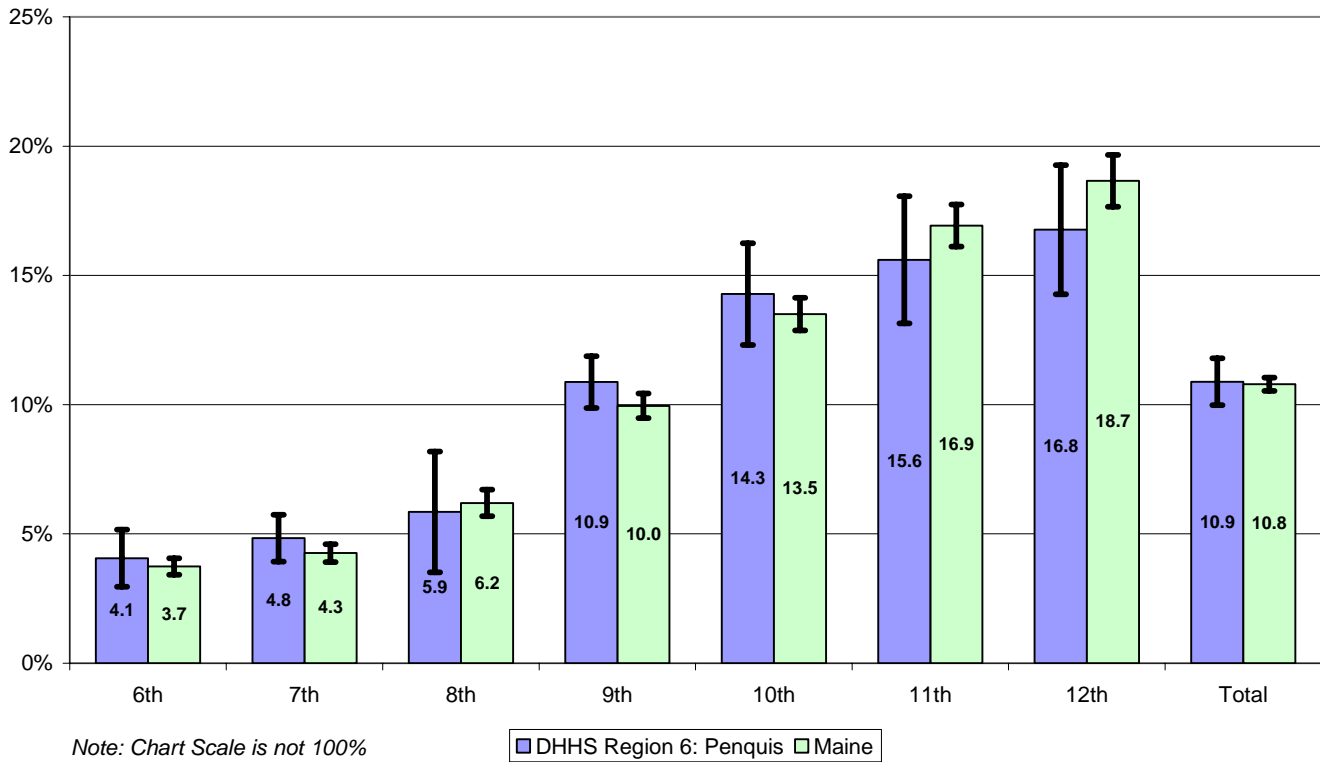
BINGE DRINKING - Prior 2 Weeks
DHHS Region 6: Penquis vs Maine, by Grade, 2008

Grade	DHHS Region 6: Penquis			Maine			Sig Diff
	LCL	%	UCL	LCL	%	UCL	
6th	0.7%	1.1%	1.6%	1.5%	1.8%	2.0%	
7th	2.0%	2.8%	3.5%	2.6%	2.8%	3.0%	
8th	7.3%	9.2%	11.1%	6.0%	6.5%	6.9%	+
9th	8.9%	11.6%	14.4%	10.3%	11.0%	11.7%	
10th	12.5%	15.6%	18.7%	15.1%	15.9%	16.7%	
11th	17.0%	18.8%	20.6%	19.5%	20.3%	21.1%	
12th	14.9%	19.0%	23.1%	24.7%	26.2%	27.8%	-
Total	11.2%	11.9%	12.6%	12.1%	12.4%	12.8%	

LCL: 95% Lower confidence limit. UCL: 95% Upper confidence limit.

Sig Diff: Significant difference at 95% confidence, where plus (+) is higher and minus (-) is lower.

**PRESCRIPTION DRUGS - Ever Used
DHHS Region 6: Penquis vs Maine, by Grade, 2008**



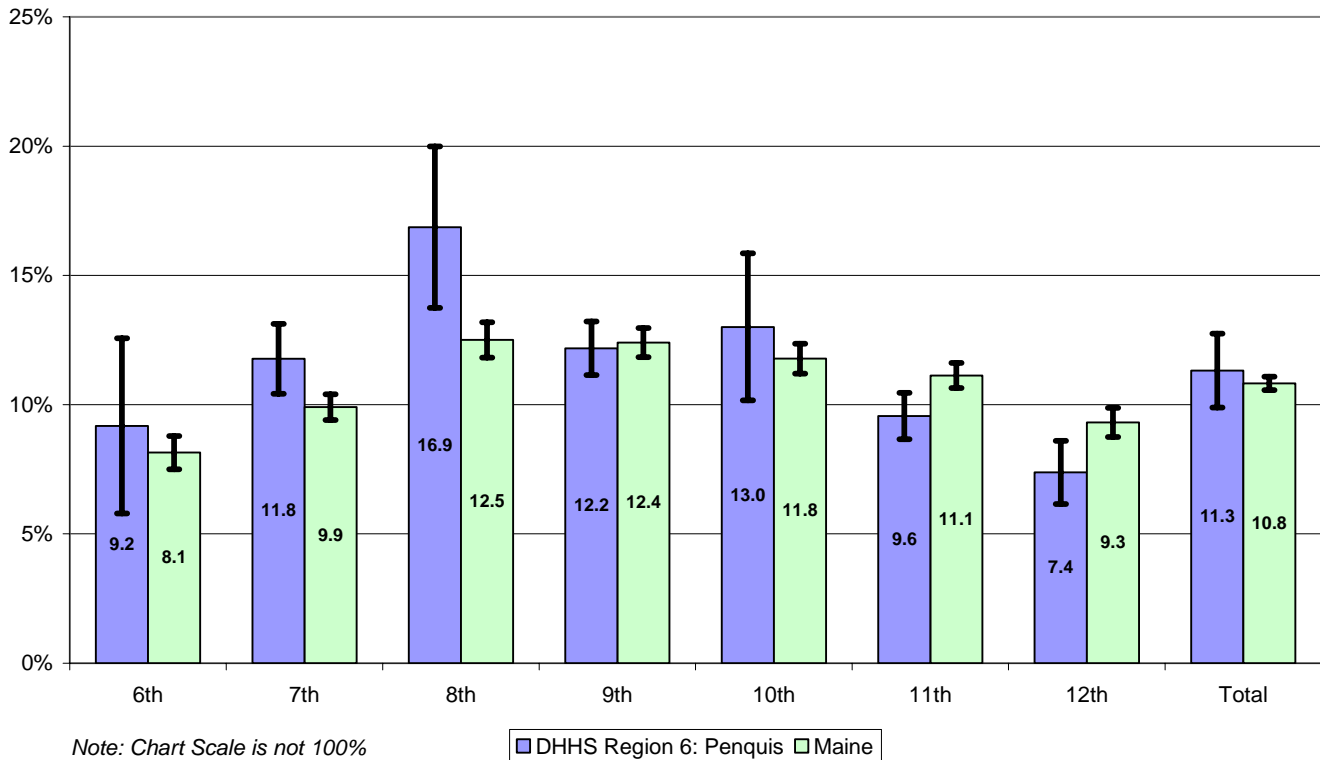
**PRESCRIPTION DRUGS - Ever Used
DHHS Region 6: Penquis vs Maine, by Grade, 2008**

Grade	DHHS Region 6: Penquis			Maine			Sig Diff
	LCL	%	UCL	LCL	%	UCL	
6th	3.0%	4.1%	5.2%	3.4%	3.7%	4.1%	
7th	3.9%	4.8%	5.7%	3.9%	4.3%	4.6%	
8th	3.5%	5.9%	8.2%	5.7%	6.2%	6.7%	
9th	9.9%	10.9%	11.9%	9.5%	10.0%	10.4%	
10th	12.3%	14.3%	16.2%	12.9%	13.5%	14.1%	
11th	13.1%	15.6%	18.1%	16.1%	16.9%	17.7%	
12th	14.3%	16.8%	19.3%	17.7%	18.7%	19.7%	
Total	10.0%	10.9%	11.8%	10.5%	10.8%	11.0%	

LCL: 95% Lower confidence limit. UCL: 95% Upper confidence limit.

Sig Diff: Significant difference at 95% confidence, where plus (+) is higher and minus (-) is lower.

**INHALANTS - Ever Used
DHHS Region 6: Penquis vs Maine, by Grade, 2008**



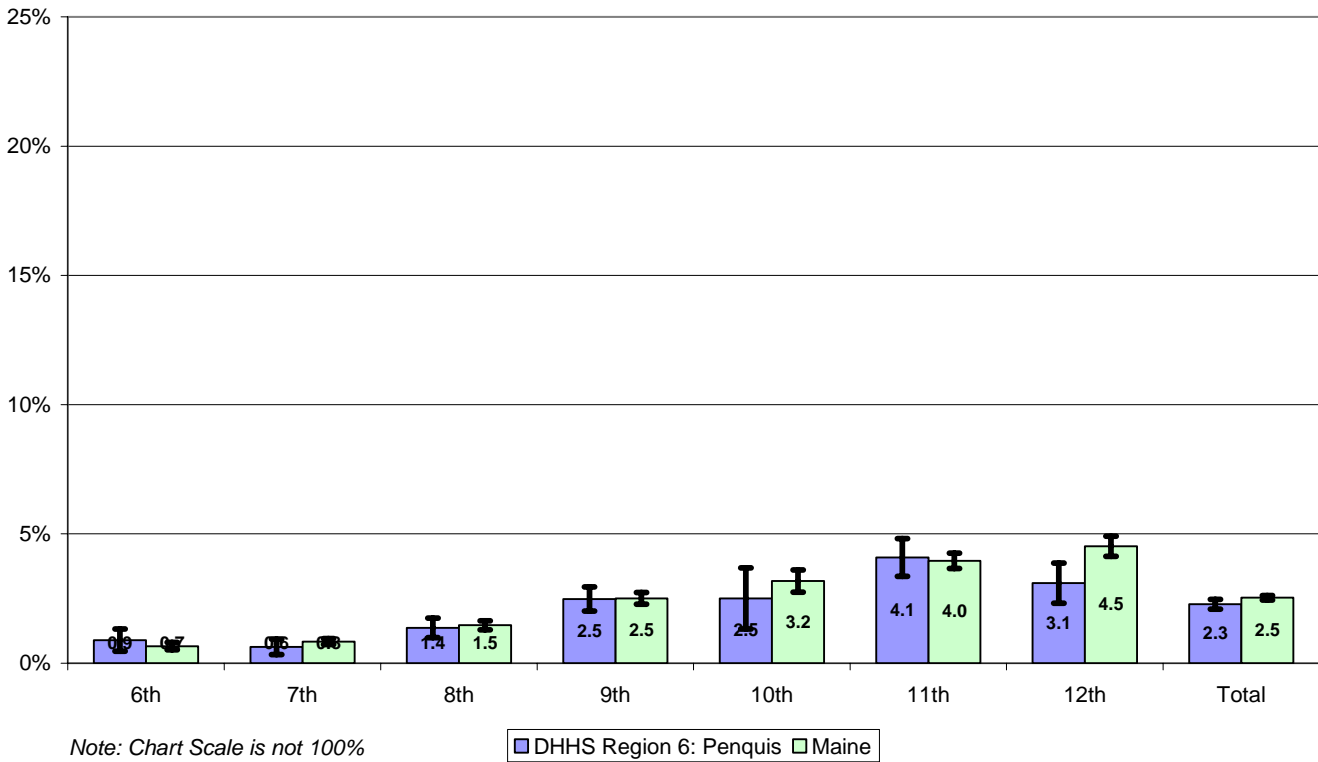
**INHALANTS - Ever Used
DHHS Region 6: Penquis vs Maine, by Grade, 2008**

Grade	DHHS Region 6: Penquis			Maine			Sig Diff
	LCL	%	UCL	LCL	%	UCL	
6th	5.8%	9.2%	12.6%	7.5%	8.1%	8.8%	
7th	10.4%	11.8%	13.1%	9.4%	9.9%	10.4%	+
8th	13.7%	16.9%	20.0%	11.8%	12.5%	13.2%	+
9th	11.1%	12.2%	13.2%	11.8%	12.4%	13.0%	
10th	10.2%	13.0%	15.9%	11.2%	11.8%	12.4%	
11th	8.7%	9.6%	10.5%	10.6%	11.1%	11.6%	-
12th	6.2%	7.4%	8.6%	8.8%	9.3%	9.9%	-
Total	9.9%	11.3%	12.7%	10.6%	10.8%	11.1%	

LCL: 95% Lower confidence limit. UCL: 95% Upper confidence limit.

Sig Diff: Significant difference at 95% confidence, where plus (+) is higher and minus (-) is lower.

**STIMULANTS - Ever Used
DHHS Region 6: Penquis vs Maine, by Grade, 2008**

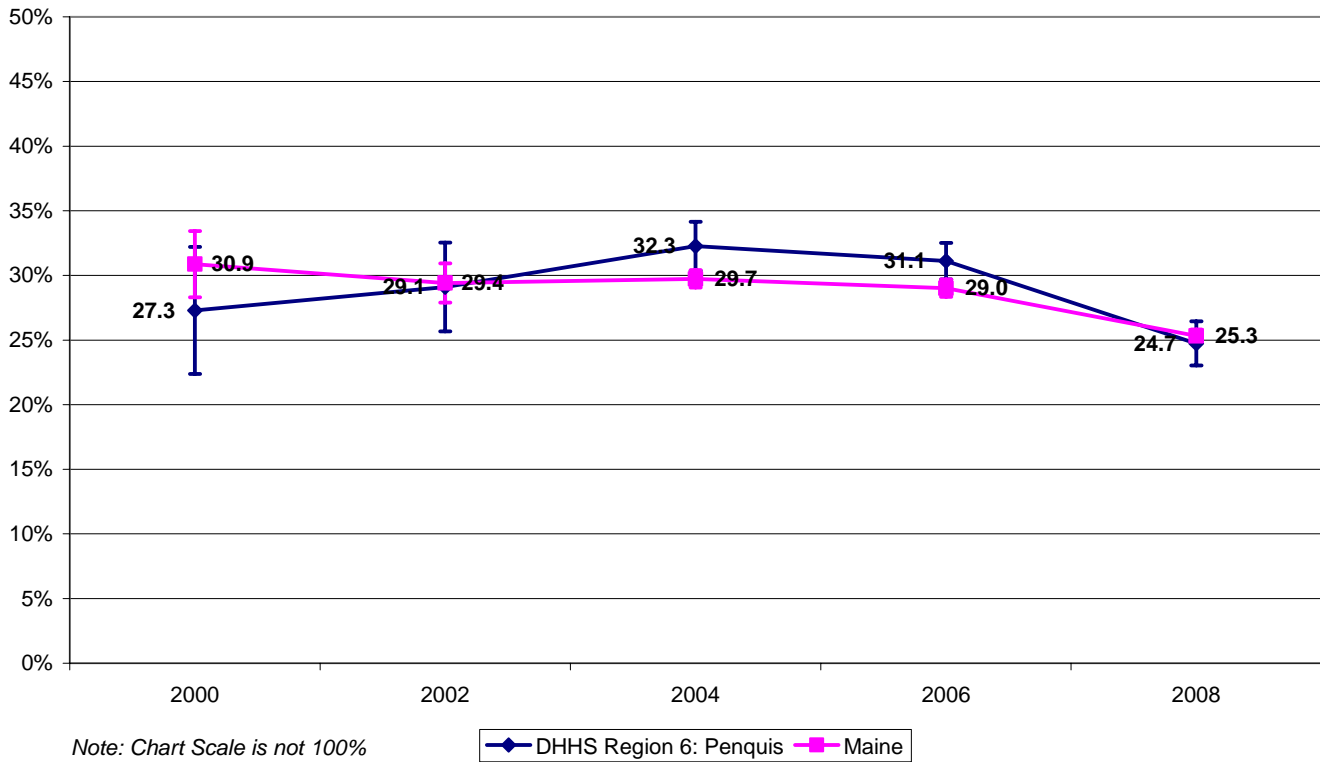


**STIMULANTS - Ever Used
DHHS Region 6: Penquis vs Maine, by Grade, 2008**

Grade	DHHS Region 6: Penquis			Maine			Sig Diff
	LCL	%	UCL	LCL	%	UCL	
6th	0.5%	0.9%	1.3%	0.5%	0.7%	0.8%	
7th	0.3%	0.6%	0.9%	0.7%	0.8%	1.0%	
8th	1.0%	1.4%	1.7%	1.3%	1.5%	1.6%	
9th	2.0%	2.5%	3.0%	2.3%	2.5%	2.7%	
10th	1.3%	2.5%	3.7%	2.8%	3.2%	3.6%	
11th	3.4%	4.1%	4.8%	3.7%	4.0%	4.3%	
12th	2.3%	3.1%	3.9%	4.1%	4.5%	4.9%	-
Total	2.1%	2.3%	2.5%	2.4%	2.5%	2.6%	

*LCL: 95% Lower confidence limit. UCL: 95% Upper confidence limit.
Sig Diff: Significant difference at 95% confidence, where plus (+) is higher and minus (-) is lower.*

ALCOHOL - Trend in Prior 30-Day Use DHHS Region 6: Penquis vs Maine



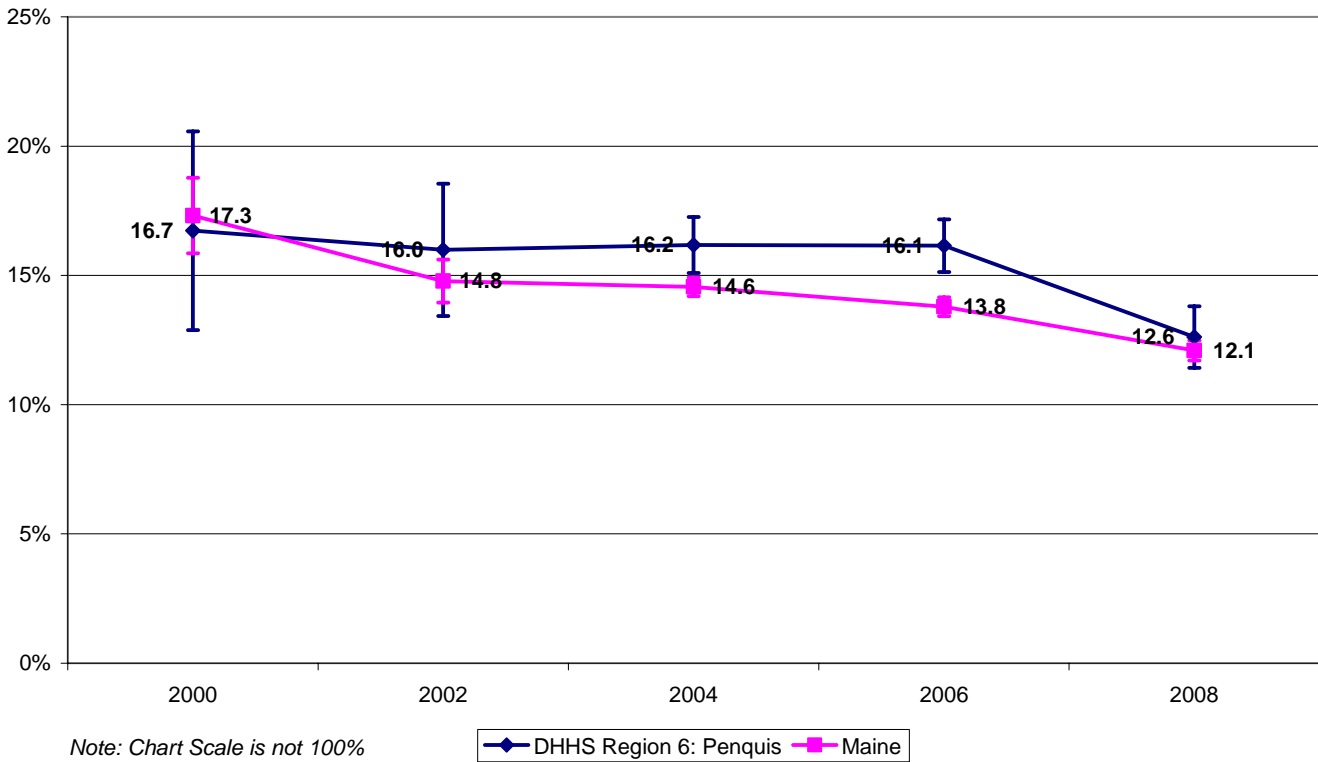
ALCOHOL - Trend in Prior 30-Day Use DHHS Region 6: Penquis vs Maine

Year	DHHS Region 6: Penquis			Maine			Sig Diff
	LCL	%	UCL	LCL	%	UCL	
2000	22.4%	27.3%	32.2%	28.3%	30.9%	33.4%	
2002	25.7%	29.1%	32.5%	27.9%	29.4%	30.9%	
2004	30.4%	32.3%	34.1%	29.1%	29.7%	30.4%	
2006	29.7%	31.1%	32.5%	28.3%	29.0%	29.7%	+
2008	23.0%	24.7%	26.5%	24.8%	25.3%	25.8%	

LCL: 95% Lower confidence limit. UCL: 95% Upper confidence limit.

Sig Diff: Significant difference at 95% confidence, where plus (+) is higher and minus (-) is lower.

CIGARETTES - Trend in Prior 30-Day Use DHHS Region 6: Penquis vs Maine



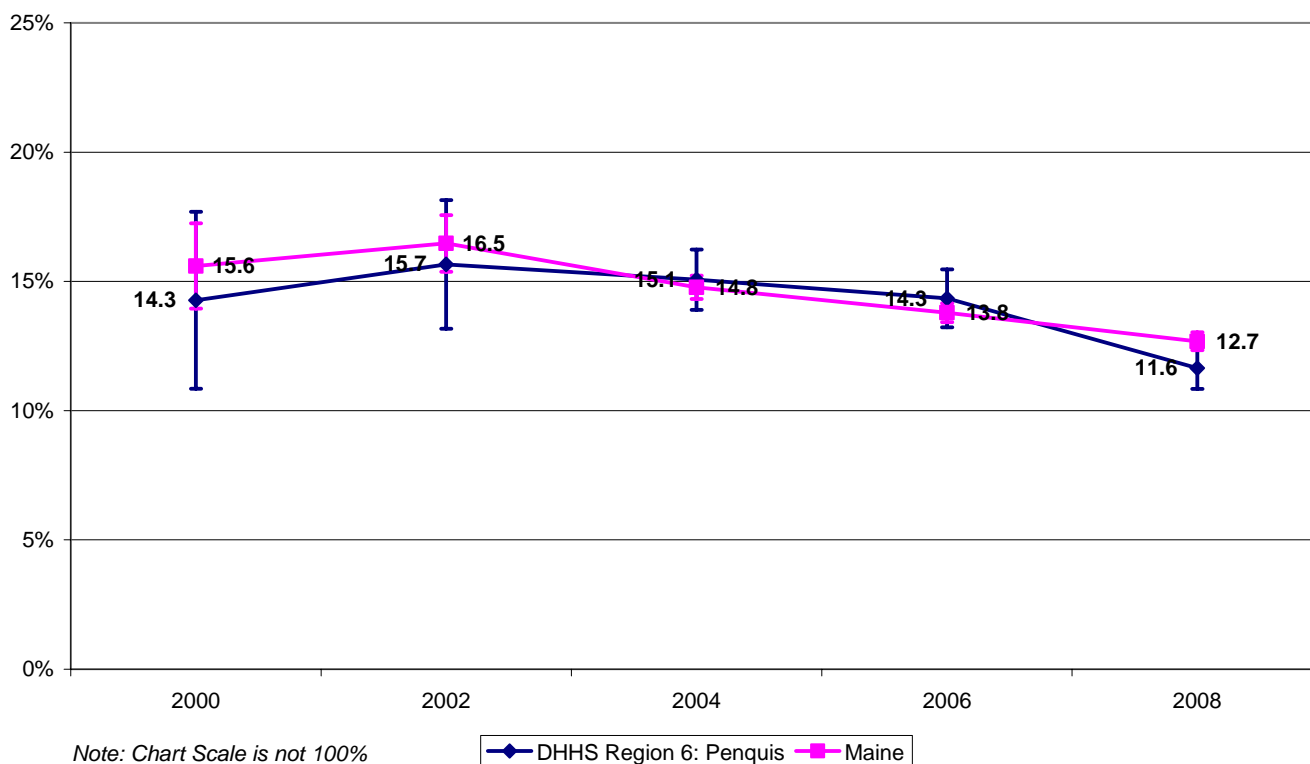
CIGARETTES - Trend in Prior 30-Day Use DHHS Region 6: Penquis vs Maine

Year	DHHS Region 6: Penquis			Maine			Sig Diff
	LCL	%	UCL	LCL	%	UCL	
2000	12.9%	16.7%	20.6%	15.8%	17.3%	18.8%	
2002	13.4%	16.0%	18.5%	13.9%	14.8%	15.6%	
2004	15.1%	16.2%	17.3%	14.2%	14.6%	14.9%	+
2006	15.1%	16.1%	17.2%	13.4%	13.8%	14.2%	+
2008	11.4%	12.6%	13.8%	11.7%	12.1%	12.5%	

LCL: 95% Lower confidence limit. UCL: 95% Upper confidence limit.

Sig Diff: Significant difference at 95% confidence, where plus (+) is higher and minus (-) is lower.

MARIJUANA - Trend in Prior 30-Day Use DHHS Region 6: Penquis vs Maine



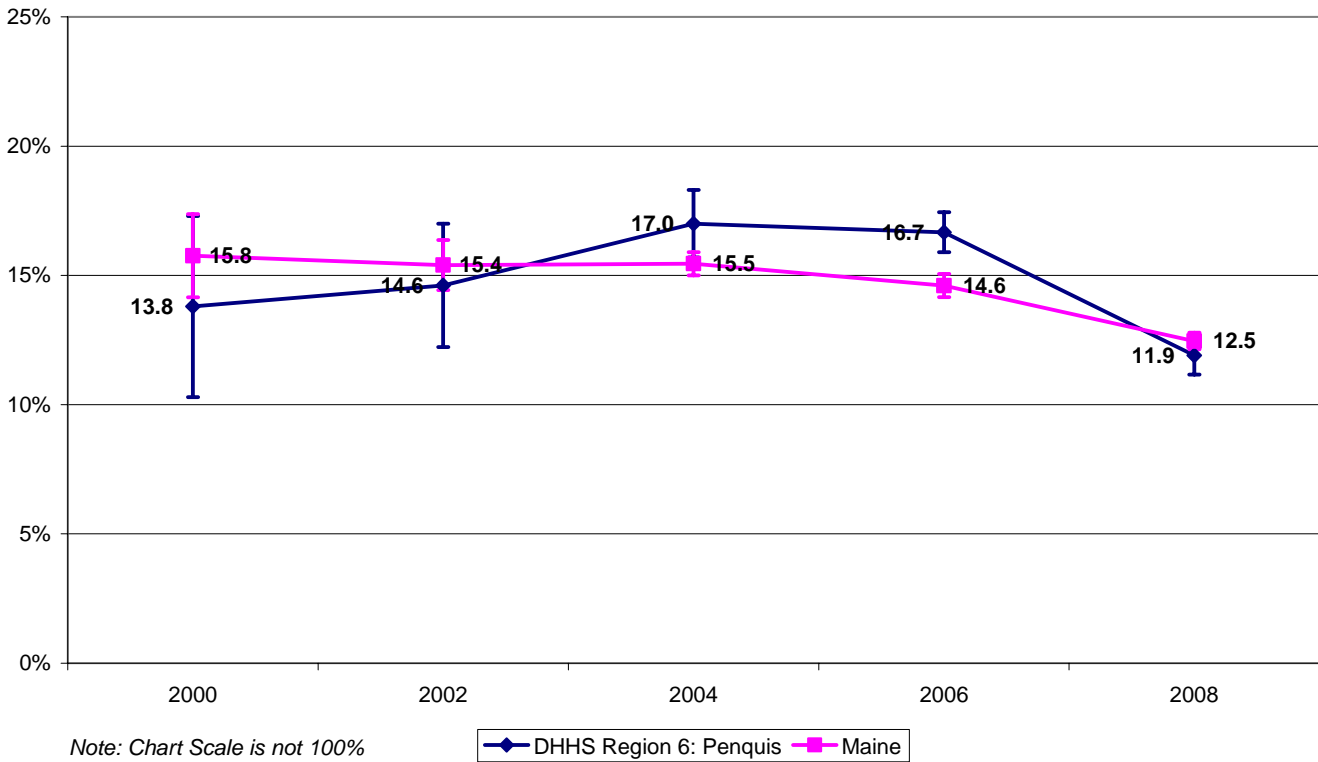
MARIJUANA - Trend in Prior 30-Day Use DHHS Region 6: Penquis vs Maine

Year	DHHS Region 6: Penquis			Maine			Sig Diff
	LCL	%	UCL	LCL	%	UCL	
2000	10.9%	14.3%	17.7%	13.9%	15.6%	17.2%	
2002	13.2%	15.7%	18.1%	15.4%	16.5%	17.6%	
2004	13.9%	15.1%	16.2%	14.3%	14.8%	15.2%	
2006	13.2%	14.3%	15.5%	13.4%	13.8%	14.2%	
2008	10.8%	11.6%	12.4%	12.3%	12.7%	13.0%	

LCL: 95% Lower confidence limit. UCL: 95% Upper confidence limit.

Sig Diff: Significant difference at 95% confidence, where plus (+) is higher and minus (-) is lower.

BINGE DRINKING - Trend in Prior 2 Weeks DHHS Region 6: Penquis vs Maine



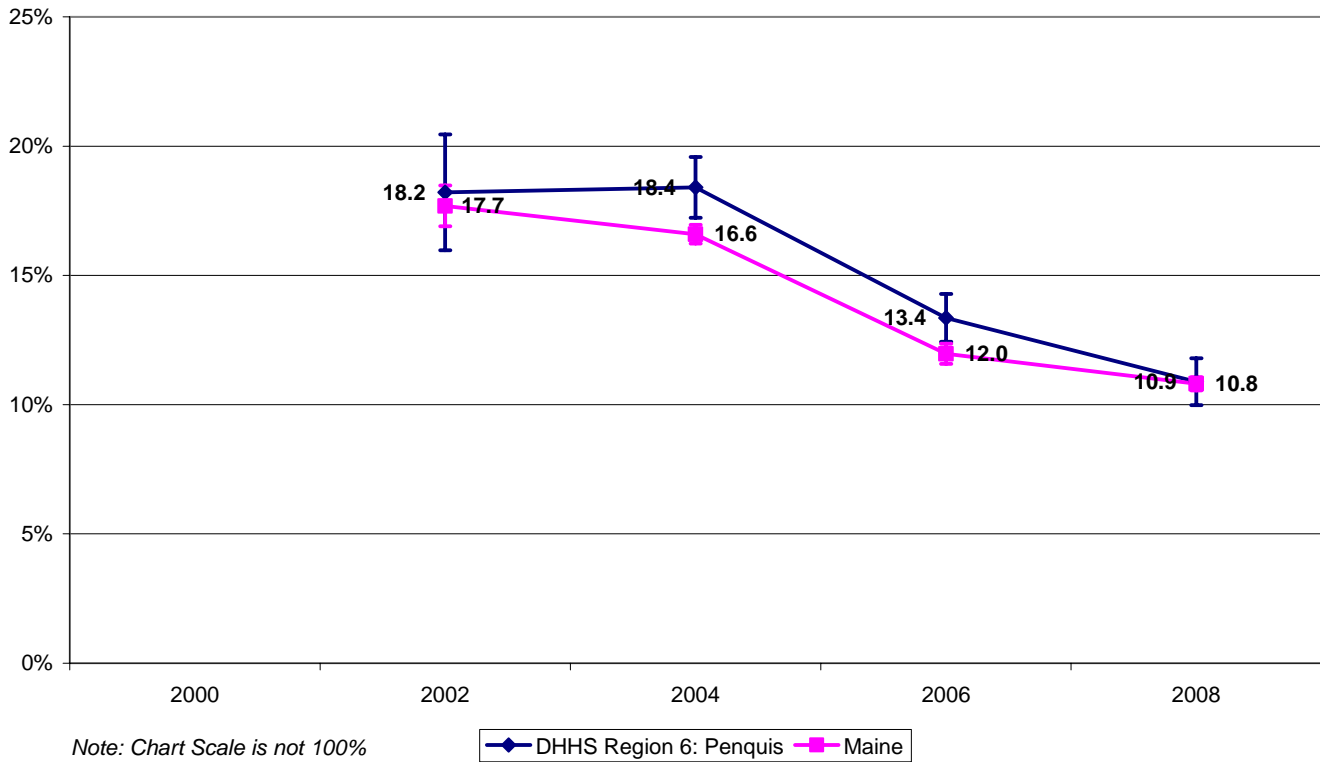
BINGE DRINKING - Trend in Prior 2 Weeks DHHS Region 6: Penquis vs Maine

Year	DHHS Region 6: Penquis			Maine			Sig Diff
	LCL	%	UCL	LCL	%	UCL	
2000	10.3%	13.8%	17.3%	14.2%	15.8%	17.4%	
2002	12.2%	14.6%	17.0%	14.4%	15.4%	16.4%	
2004	15.7%	17.0%	18.3%	15.0%	15.5%	15.9%	
2006	15.9%	16.7%	17.4%	14.2%	14.6%	15.1%	+
2008	11.2%	11.9%	12.6%	12.1%	12.5%	12.8%	

LCL: 95% Lower confidence limit. UCL: 95% Upper confidence limit.

Sig Diff: Significant difference at 95% confidence, where plus (+) is higher and minus (-) is lower.

**PRESCRIPTION DRUGS - Trend in Ever Used
DHHS Region 6: Penquis vs Maine**



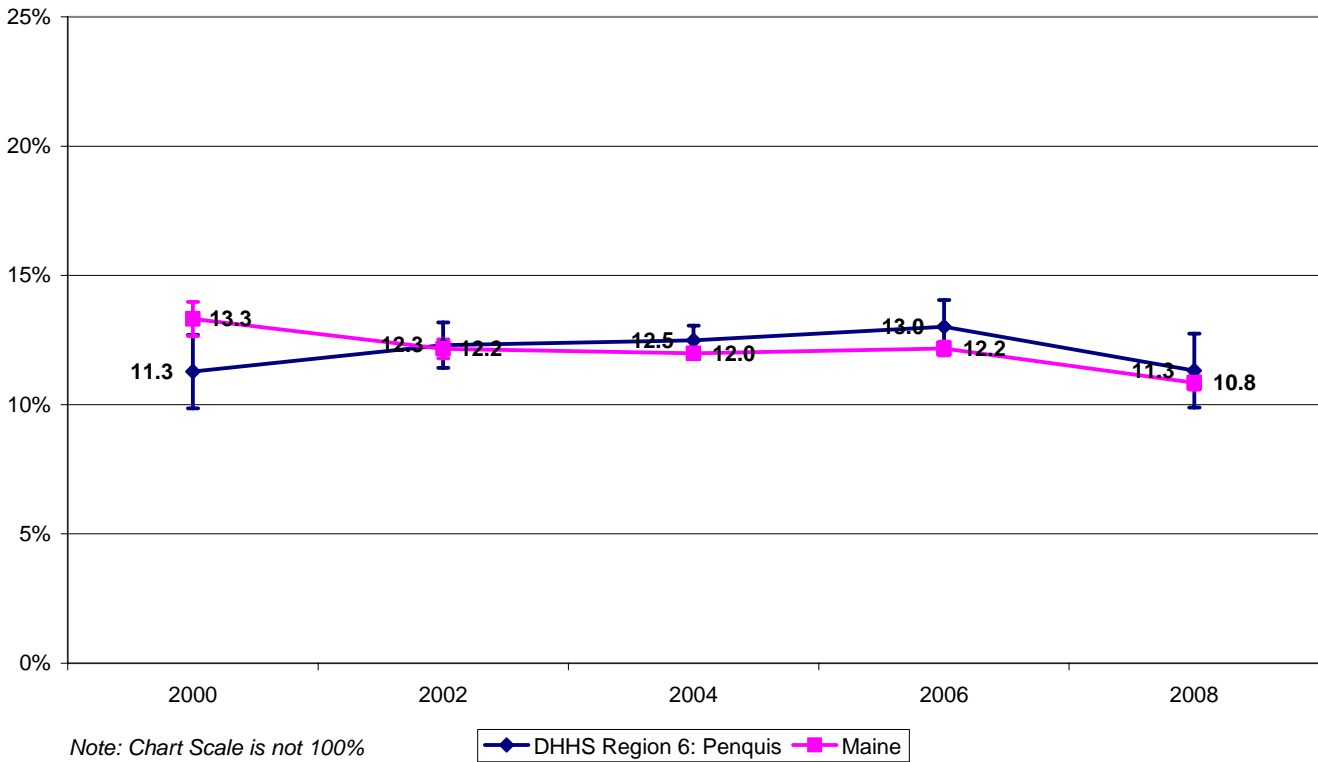
**PRESCRIPTION DRUGS - Trend in Ever Used
DHHS Region 6: Penquis vs Maine**

Year	DHHS Region 6: Penquis			Maine			Sig Diff
	LCL	%	UCL	LCL	%	UCL	
2000	-	-	-	-	-	-	
2002	16.0%	18.2%	20.5%	16.9%	17.7%	18.5%	
2004	17.2%	18.4%	19.6%	16.2%	16.6%	17.0%	+
2006	12.4%	13.4%	14.3%	11.6%	12.0%	12.4%	+
2008	10.0%	10.9%	11.8%	10.6%	10.8%	11.1%	

LCL: 95% Lower confidence limit. UCL: 95% Upper confidence limit.

Sig Diff: Significant difference at 95% confidence, where plus (+) is higher and minus (-) is lower.

INHALANTS - Trend in Ever Used DHHS Region 6: Penquis vs Maine



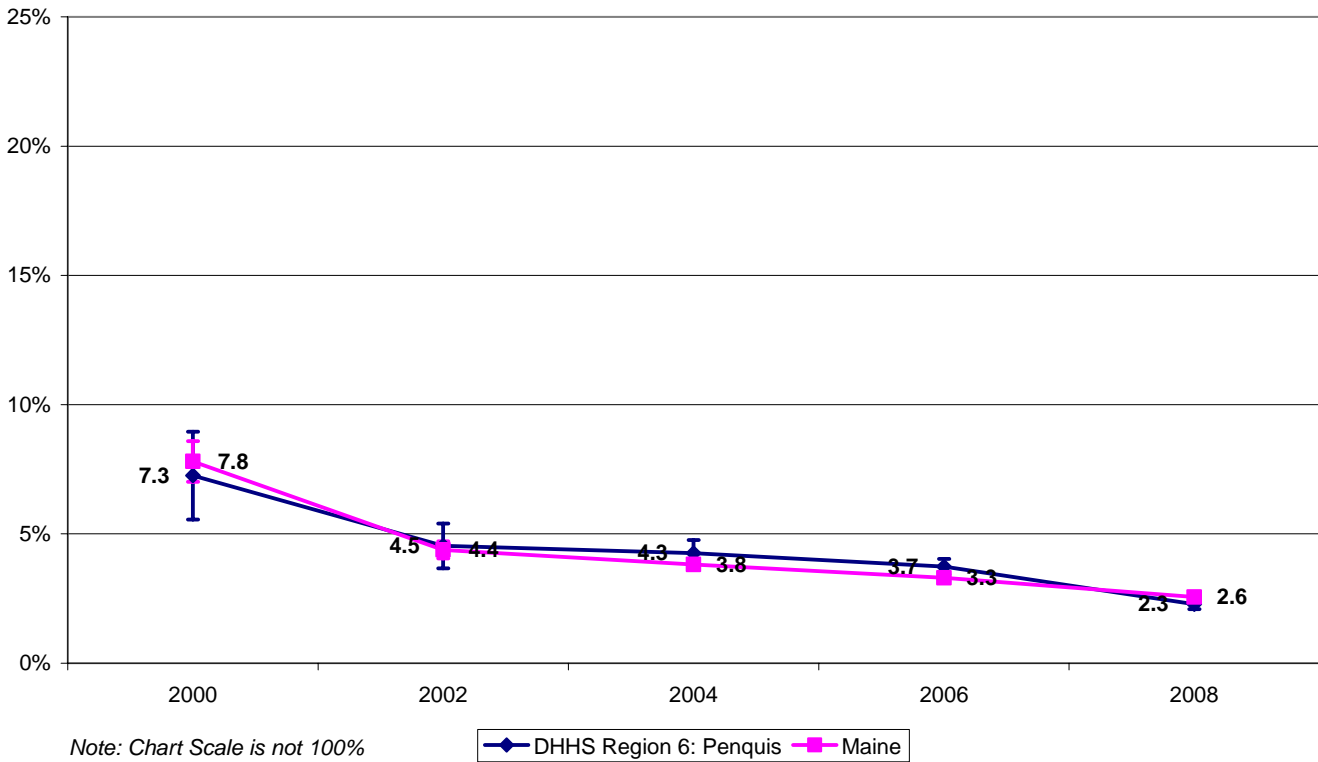
INHALANTS - Trend in Ever Used DHHS Region 6: Penquis vs Maine

Year	DHHS Region 6: Penquis			Maine			Sig Diff
	LCL	%	UCL	LCL	%	UCL	
2000	9.9%	11.3%	12.7%	12.7%	13.3%	14.0%	
2002	11.4%	12.3%	13.2%	11.8%	12.2%	12.5%	
2004	11.9%	12.5%	13.1%	11.8%	12.0%	12.2%	
2006	12.0%	13.0%	14.0%	11.9%	12.2%	12.4%	
2008	9.9%	11.3%	12.7%	10.6%	10.8%	11.1%	

LCL: 95% Lower confidence limit. UCL: 95% Upper confidence limit.

Sig Diff: Significant difference at 95% confidence, where plus (+) is higher and minus (-) is lower.

STIMULANTS - Trend in Ever Used DHHS Region 6: Penquis vs Maine



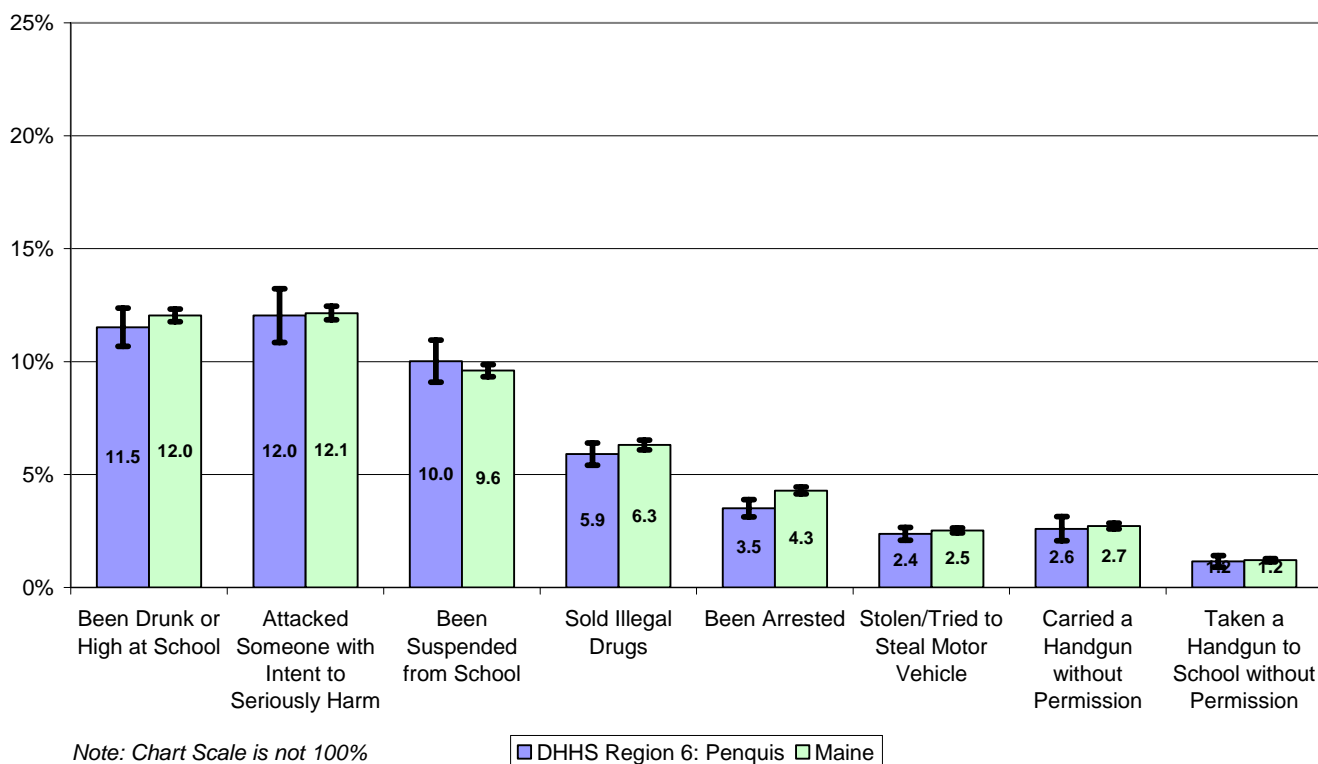
STIMULANTS - Trend in Ever Used DHHS Region 6: Penquis vs Maine

Year	DHHS Region 6: Penquis			Maine			Sig Diff
	LCL	%	UCL	LCL	%	UCL	
2000	5.6%	7.3%	9.0%	7.0%	7.8%	8.6%	
2002	3.7%	4.5%	5.4%	4.0%	4.4%	4.7%	
2004	3.7%	4.3%	4.8%	3.7%	3.8%	4.0%	
2006	3.4%	3.7%	4.0%	3.2%	3.3%	3.4%	+
2008	2.1%	2.3%	2.5%	2.5%	2.6%	2.7%	

LCL: 95% Lower confidence limit. UCL: 95% Upper confidence limit.

Sig Diff: Significant difference at 95% confidence, where plus (+) is higher and minus (-) is lower.

**PROHIBITIVE BEHAVIORS, Prevalence during Prior Year
DHHS Region 6: Penquis vs Maine, Grades 6-12, 2008**



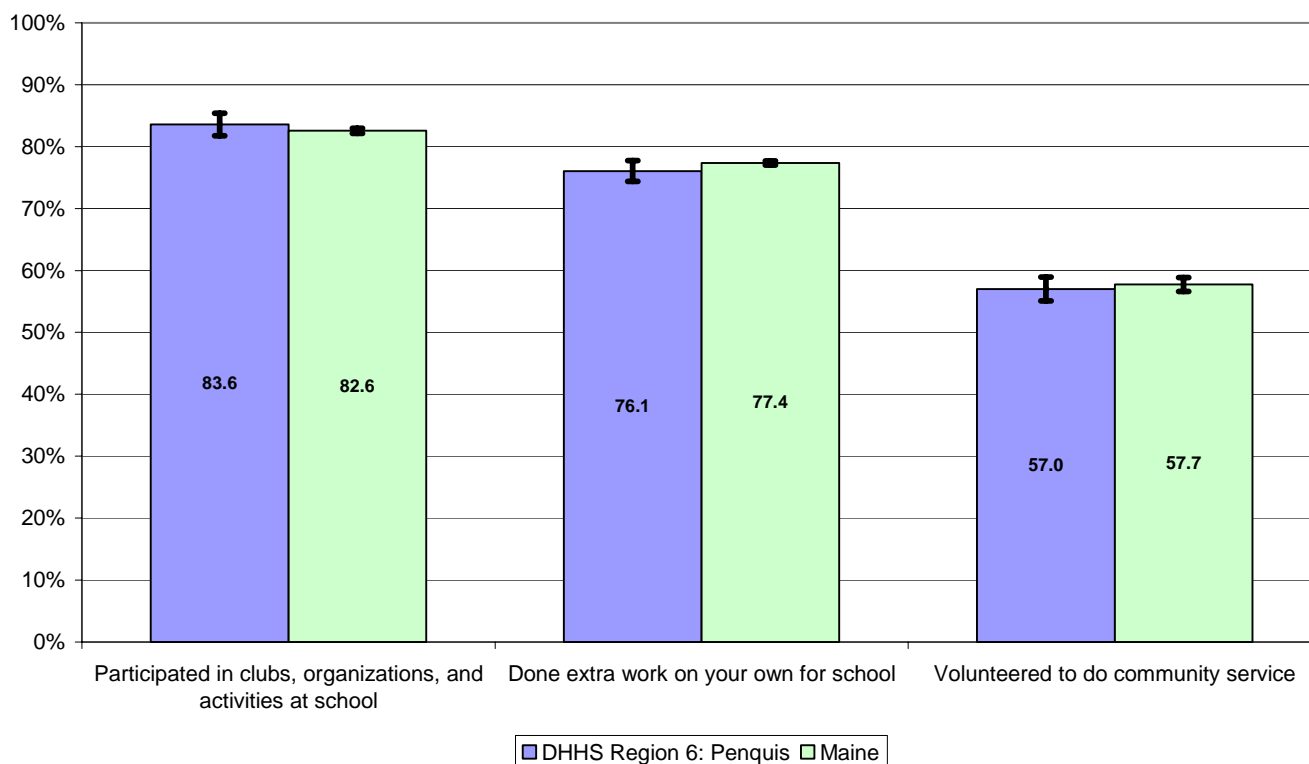
**PROHIBITIVE BEHAVIORS, Prevalence during Prior Year
DHHS Region 6: Penquis vs Maine, Grades 6-12, 2008**

Behavior	DHHS Region 6: Penquis			Maine			Sig Diff
	LCL	%	UCL	LCL	%	UCL	
Been Drunk or High at School	10.7%	11.5%	12.4%	11.8%	12.0%	12.3%	
Attacked Someone with Intent to Seriously Harm	10.8%	12.0%	13.2%	11.9%	12.1%	12.4%	
Been Suspended from School	9.1%	10.0%	11.0%	9.3%	9.6%	9.9%	
Sold Illegal Drugs	5.4%	5.9%	6.4%	6.1%	6.3%	6.5%	
Been Arrested	3.1%	3.5%	3.9%	4.1%	4.3%	4.4%	-
Stolen/Tried to Steal Motor Vehicle	2.1%	2.4%	2.7%	2.4%	2.5%	2.6%	
Carried a Handgun without Permission	2.1%	2.6%	3.1%	2.6%	2.7%	2.8%	
Taken a Handgun to School without Permission	0.9%	1.2%	1.4%	1.1%	1.2%	1.3%	

LCL: 95% Lower confidence limit. UCL: 95% Upper confidence limit.

Sig Diff: Significant difference at 95% confidence, where plus (+) is higher and minus (-) is lower.

**PRO-SOCIAL BEHAVIORS - Prevalence during Prior Year
DHHS Region 6: Penquis vs Maine, Grades 6-12, 2008**



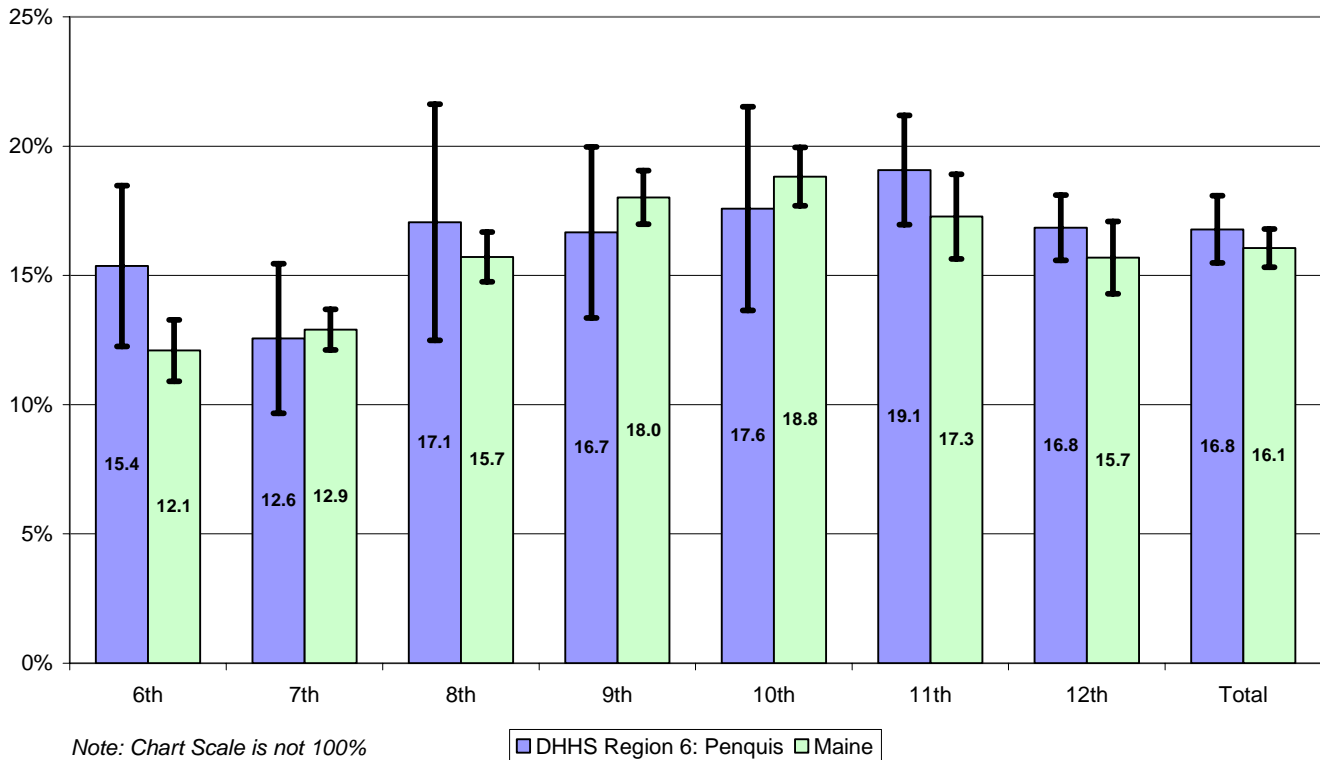
**PRO-SOCIAL BEHAVIORS - Prevalence during Prior Year
DHHS Region 6: Penquis vs Maine, Grades 6-12, 2008**

Behavior	DHHS Region 6: Penquis			Maine			Sig Diff
	LCL	%	UCL	LCL	%	UCL	
Participated in clubs, organizations, and activities at school	81.8%	83.6%	85.4%	82.2%	82.6%	83.0%	
Done extra work on your own for school	74.4%	76.1%	77.7%	77.0%	77.4%	77.7%	
Volunteered to do community service	55.1%	57.0%	58.9%	56.6%	57.7%	58.9%	

LCL: 95% Lower confidence limit. UCL: 95% Upper confidence limit.

Sig Diff: Significant difference at 95% confidence, where plus (+) is higher and minus (-) is lower.

**Prevalence of Students Feeling Unsafe at School
DHHS Region 6: Penquis vs Maine, by Grade, 2008**



**Prevalence of Students Feeling Unsafe at School
DHHS Region 6: Penquis vs Maine, by Grade, 2008**

Grade	DHHS Region 6: Penquis			Maine			Sig Diff
	LCL	%	UCL	LCL	%	UCL	
6th	12.3%	15.4%	18.5%	10.9%	12.1%	13.3%	
7th	9.7%	12.6%	15.5%	12.1%	12.9%	13.7%	
8th	12.5%	17.1%	21.6%	14.8%	15.7%	16.7%	
9th	13.4%	16.7%	20.0%	17.0%	18.0%	19.1%	
10th	13.6%	17.6%	21.5%	17.7%	18.8%	19.9%	
11th	17.0%	19.1%	21.2%	15.6%	17.3%	18.9%	
12th	15.6%	16.8%	18.1%	14.3%	15.7%	17.1%	
Total	15.5%	16.8%	18.1%	15.3%	16.1%	16.8%	

LCL: 95% Lower confidence limit. UCL: 95% Upper confidence limit.

Sig Diff: Significant difference at 95% confidence, where plus (+) is higher and minus (-) is lower.

**Prevalence of Students “At Risk” - Grade 6
DHHS Region 6: Penquis vs Maine, 2008**

Community Risk Factors	DHHS Region 6: Penquis			Maine			Sig Diff
	LCL	%	UCL	LCL	%	UCL	
Laws and Norms Favorable to Drug Use	35.1%	37.4%	39.7%	37.0%	37.9%	38.8%	
Perceived Availability of Drugs	23.9%	25.8%	27.7%	26.9%	27.7%	28.6%	
Perceived Availability of Handguns	23.4%	25.3%	27.2%	21.2%	22.0%	22.8%	+
Family Risk Factors							
Poor Family Management	33.1%	37.7%	42.4%	35.8%	36.7%	37.6%	
Family History of Antisocial Behavior	25.2%	29.1%	33.0%	27.4%	28.2%	29.1%	
Parental Attitude Favorable to Drug Use*	9.6%	12.0%	14.5%	10.1%	10.6%	11.1%	
Parental Attitude Favorable to Antisocial Behavior*	29.0%	32.3%	35.7%	30.0%	30.8%	31.6%	
School Risk Factors							
Lower Academic Achievement	37.8%	42.3%	46.8%	39.9%	40.9%	42.0%	
Low Commitment to School	51.2%	54.8%	58.5%	51.0%	52.0%	53.1%	
Peer/Individual Risk Factors							
Rebelliousness	39.7%	44.5%	49.4%	39.8%	40.8%	41.8%	
Early Initiation of Drug Use	16.6%	20.2%	23.7%	18.0%	18.8%	19.7%	
Attitudes Favorable to Antisocial Behavior	41.7%	46.5%	51.4%	43.8%	44.8%	45.8%	
Attitudes Favorable to Drug Use	13.8%	17.6%	21.5%	15.9%	16.8%	17.7%	
Intension to Use Drugs	39.1%	45.4%	51.7%	45.8%	46.9%	48.1%	
Perceived Risk of Drug Use	19.6%	23.4%	27.3%	22.5%	23.5%	24.4%	
Interaction with Antisocial Peers	28.0%	31.8%	35.5%	27.9%	29.0%	30.1%	
Friends' Use of Drugs	16.2%	20.0%	23.7%	17.6%	18.6%	19.6%	
Sensation Seeking	40.9%	43.6%	46.3%	41.9%	42.8%	43.7%	
Rewards for Antisocial Behavior	20.2%	23.1%	26.0%	22.0%	22.8%	23.6%	

* “Favor” does not necessarily mean parents favor the activity. These items are the students’ perception of parental attitudes. Students may perceive their parents as believing the behavior or drug use is wrong, but if parents are not perceived as thinking it is **“very wrong”**, then the student is at increased risk of participating in the undesirable behavior. “Antisocial Behavior” refers to stealing something worth more than \$5, drawing graffiti, and picking a fight with someone. ”Drug use” refers to the use of alcohol, cigarettes, and marijuana.

**Prevalence of Students "Protected" - Grade 6
DHHS Region 6: Penquis vs Maine, 2008**

	DHHS Region 6: Penquis			Maine			Sig Diff
	LCL	%	UCL	LCL	%	UCL	
Community Protective Factors							
Community Opportunities for Positive Involvement	41.9%	45.7%	49.5%	47.9%	48.8%	49.8%	
Community Rewards for Positive Involvement	42.3%	45.0%	47.6%	46.4%	47.3%	48.3%	
Family Protective Factors							
Family Attachment	53.2%	57.0%	60.7%	56.9%	57.8%	58.7%	
Family Opportunities for Positive Involvement	54.1%	57.7%	61.3%	59.4%	60.2%	60.9%	
Family Rewards for Positive Involvement	53.0%	56.9%	60.7%	55.1%	56.0%	56.9%	
School Protective Factors							
School Opportunities for Positive Involvement	58.1%	63.3%	68.5%	59.2%	60.5%	61.7%	
School Rewards for Positive Involvement	51.7%	54.9%	58.1%	57.1%	58.3%	59.5%	
Peer/Individual Protective Factors							
Social Skills	70.4%	74.5%	78.6%	73.9%	74.8%	75.6%	
Belief in the Moral Order	64.8%	67.4%	70.0%	65.6%	66.5%	67.4%	

**Prevalence of Students “At Risk” - Grade 8
DHHS Region 6: Penquis vs Maine, 2008**

	DHHS Region 6: Penquis			Maine			Sig Diff
	LCL	%	UCL	LCL	%	UCL	
Community Risk Factors							
Laws and Norms Favorable to Drug Use	34.9%	38.9%	42.8%	34.5%	35.6%	36.8%	
Perceived Availability of Drugs	26.3%	29.6%	32.9%	26.6%	27.5%	28.5%	
Perceived Availability of Handguns	36.4%	39.3%	42.2%	34.0%	34.8%	35.6%	+
Family Risk Factors							
Poor Family Management	36.6%	40.4%	44.2%	39.1%	40.3%	41.5%	
Family History of Antisocial Behavior	27.2%	33.6%	40.1%	30.0%	31.2%	32.4%	
Parental Attitude Favorable to Drug Use*	21.2%	24.5%	27.9%	21.0%	21.8%	22.6%	
Parental Attitude Favorable to Antisocial Behavior*	45.3%	48.9%	52.6%	43.5%	44.4%	45.4%	
School Risk Factors							
Lower Academic Achievement	40.8%	43.5%	46.2%	43.7%	44.6%	45.4%	
Low Commitment to School	44.9%	49.1%	53.3%	46.8%	48.0%	49.2%	
Peer/Individual Risk Factors							
Rebelliousness	31.1%	36.5%	41.9%	30.9%	32.0%	33.1%	
Early Initiation of Drug Use	17.0%	21.9%	26.7%	18.7%	19.6%	20.5%	
Attitudes Favorable to Antisocial Behavior	38.2%	43.2%	48.3%	38.7%	39.9%	41.0%	
Attitudes Favorable to Drug Use	24.9%	28.4%	31.8%	23.3%	24.2%	25.1%	
Intention to Use Drugs	25.3%	29.9%	34.4%	26.0%	27.1%	28.3%	
Perceived Risk of Drug Use	31.4%	34.2%	37.0%	32.4%	33.4%	34.5%	
Interaction with Antisocial Peers	40.8%	46.3%	51.9%	42.0%	43.3%	44.6%	
Friends' Use of Drugs	26.0%	31.4%	36.8%	28.2%	29.3%	30.5%	
Sensation Seeking	44.2%	48.0%	51.9%	45.0%	45.9%	46.8%	
Rewards for Antisocial Behavior	32.2%	36.8%	41.4%	33.5%	34.6%	35.8%	

* “Favor” does not necessarily mean parents favor the activity. These items are the students’ perception of parental attitudes. Students may perceive their parents as believing the behavior or drug use is wrong, but if parents are not perceived as thinking it is “**very wrong**”, then the student is at increased risk of participating in the undesirable behavior. “Antisocial Behavior” refers to stealing something worth more than \$5, drawing graffiti, and picking a fight with someone. “Drug use” refers to the use of alcohol, cigarettes, and marijuana.

**Prevalence of Students "Protected" - Grade 8
DHHS Region 6: Penquis vs Maine, 2008**

	DHHS Region 6: Penquis			Maine			Sig Diff
	LCL	%	UCL	LCL	%	UCL	
Community Protective Factors							
Community Opportunities for Positive Involvement	44.8%	48.1%	51.4%	46.9%	47.8%	48.7%	
Community Rewards for Positive Involvement	32.0%	34.7%	37.5%	33.5%	34.4%	35.3%	
Family Protective Factors							
Family Attachment	51.7%	55.7%	59.7%	52.1%	53.2%	54.3%	
Family Opportunities for Positive Involvement	57.0%	60.4%	63.8%	60.3%	61.3%	62.4%	
Family Rewards for Positive Involvement	59.6%	63.3%	67.0%	62.4%	63.4%	64.5%	
School Protective Factors							
School Opportunities for Positive Involvement	63.8%	69.3%	74.9%	67.4%	68.7%	69.9%	
School Rewards for Positive Involvement	54.4%	58.7%	63.0%	58.4%	59.7%	61.0%	
Peer/Individual Protective Factors							
Social Skills	62.6%	66.6%	70.6%	67.3%	68.3%	69.3%	
Belief in the Moral Order	58.2%	62.5%	66.7%	65.2%	66.2%	67.3%	

**Prevalence of Students “At Risk” - Grade 10
DHHS Region 6: Penquis vs Maine, 2008**

	DHHS Region 6: Penquis			Maine			Sig Diff
	LCL	%	UCL	LCL	%	UCL	
Community Risk Factors							
Laws and Norms Favorable to Drug Use	41.2%	48.4%	55.6%	46.1%	47.3%	48.5%	
Perceived Availability of Drugs	26.7%	35.3%	43.8%	35.1%	36.5%	37.9%	
Perceived Availability of Handguns	24.5%	25.8%	27.1%	18.5%	19.4%	20.2%	+
Family Risk Factors							
Poor Family Management	34.8%	39.8%	44.8%	40.5%	41.5%	42.6%	
Family History of Antisocial Behavior	29.1%	34.8%	40.4%	35.0%	36.2%	37.4%	
Parental Attitude Favorable to Drug Use*	29.1%	36.4%	43.7%	37.4%	38.8%	40.2%	
Parental Attitude Favorable to Antisocial Behavior*	41.8%	48.5%	55.2%	50.6%	52.0%	53.5%	
School Risk Factors							
Lower Academic Achievement	45.7%	47.4%	49.0%	45.8%	46.5%	47.2%	
Low Commitment to School	38.7%	43.3%	47.9%	44.7%	46.1%	47.4%	
Peer/Individual Risk Factors							
Rebelliousness	31.8%	36.5%	41.3%	36.3%	37.4%	38.5%	
Early Initiation of Drug Use	18.5%	24.6%	30.7%	24.6%	25.7%	26.8%	
Attitudes Favorable to Antisocial Behavior	45.2%	48.3%	51.4%	48.1%	49.1%	50.2%	
Attitudes Favorable to Drug Use	30.7%	36.0%	41.4%	38.4%	39.8%	41.3%	
Intension to Use Drugs	33.4%	40.3%	47.2%	41.4%	42.9%	44.4%	
Perceived Risk of Drug Use	35.5%	40.8%	46.1%	40.7%	41.9%	43.0%	
Interaction with Antisocial Peers	47.2%	48.7%	50.2%	47.1%	47.8%	48.5%	
Friends' Use of Drugs	34.2%	39.1%	44.0%	38.6%	39.7%	40.7%	
Sensation Seeking	39.4%	44.0%	48.5%	45.2%	46.4%	47.5%	
Rewards for Antisocial Behavior	30.2%	39.5%	48.8%	41.3%	43.2%	45.0%	

* “Favor” does not necessarily mean parents favor the activity. These items are the students’ perception of parental attitudes. Students may perceive their parents as believing the behavior or drug use is wrong, but if parents are not perceived as thinking it is “**very wrong**”, then the student is at increased risk of participating in the undesirable behavior. “Antisocial Behavior” refers to stealing something worth more than \$5, drawing graffiti, and picking a fight with someone. ”Drug use” refers to the use of alcohol, cigarettes, and marijuana.

**Prevalence of Students "Protected" - Grade 10
DHHS Region 6: Penquis vs Maine, 2008**

	DHHS Region 6: Penquis			Maine			Sig Diff
	LCL	%	UCL	LCL	%	UCL	
Community Protective Factors							
Community Opportunities for Positive Involvement	41.2%	45.7%	50.3%	41.4%	42.6%	43.8%	
Community Rewards for Positive Involvement	44.7%	47.4%	50.1%	40.9%	42.0%	43.1%	+
Family Protective Factors							
Family Attachment	41.1%	46.3%	51.5%	45.5%	46.5%	47.6%	
Family Opportunities for Positive Involvement	50.5%	56.3%	62.2%	53.6%	54.8%	56.1%	
Family Rewards for Positive Involvement	52.5%	57.2%	61.9%	55.5%	56.5%	57.5%	
School Protective Factors							
School Opportunities for Positive Involvement	66.8%	70.3%	73.8%	66.3%	67.3%	68.3%	
School Rewards for Positive Involvement	66.6%	68.5%	70.4%	66.4%	67.5%	68.6%	
Peer/Individual Protective Factors							
Social Skills	53.5%	58.0%	62.5%	53.6%	55.0%	56.4%	
Belief in the Moral Order	64.8%	68.8%	72.7%	67.0%	68.0%	68.9%	

**Prevalence of Students “At Risk” - Grade 12
DHHS Region 6: Penquis vs Maine, 2008**

	DHHS Region 6: Penquis			Maine			Sig Diff
	LCL	%	UCL	LCL	%	UCL	
Community Risk Factors							
Laws and Norms Favorable to Drug Use	39.7%	46.2%	52.7%	45.6%	47.2%	48.8%	
Perceived Availability of Drugs	35.9%	39.9%	44.0%	42.5%	43.7%	45.0%	
Perceived Availability of Handguns	23.8%	27.9%	32.0%	21.4%	22.6%	23.8%	+
Family Risk Factors							
Poor Family Management	34.1%	39.0%	43.9%	42.0%	43.6%	45.2%	
Family History of Antisocial Behavior	32.0%	35.3%	38.6%	34.6%	35.9%	37.2%	
Parental Attitude Favorable to Drug Use*	34.6%	40.1%	45.6%	42.8%	44.1%	45.5%	
Parental Attitude Favorable to Antisocial Behavior*	50.8%	53.6%	56.4%	52.8%	54.0%	55.2%	
School Risk Factors							
Lower Academic Achievement	37.5%	39.2%	40.9%	39.6%	40.6%	41.5%	
Low Commitment to School	42.6%	44.2%	45.7%	43.9%	45.7%	47.6%	
Peer/Individual Risk Factors							
Rebelliousness	29.4%	33.8%	38.1%	35.0%	36.4%	37.9%	
Early Initiation of Drug Use	21.1%	25.1%	29.0%	27.0%	28.4%	29.9%	
Attitudes Favorable to Antisocial Behavior	42.2%	44.2%	46.3%	46.5%	48.0%	49.5%	-
Attitudes Favorable to Drug Use	31.9%	37.7%	43.5%	40.4%	42.5%	44.5%	
Intension to Use Drugs	29.7%	32.5%	35.4%	34.0%	35.2%	36.3%	
Perceived Risk of Drug Use	42.1%	47.6%	53.1%	50.0%	51.9%	53.8%	
Interaction with Antisocial Peers	43.6%	45.5%	47.3%	46.8%	48.4%	50.0%	
Friends' Use of Drugs	35.4%	37.1%	38.9%	39.4%	41.3%	43.1%	-
Sensation Seeking	41.1%	44.2%	47.4%	46.4%	48.2%	49.9%	
Rewards for Antisocial Behavior	56.9%	58.5%	60.1%	58.9%	60.0%	61.1%	

* “Favor” does not necessarily mean parents favor the activity. These items are the students’ perception of parental attitudes. Students may perceive their parents as believing the behavior or drug use is wrong, but if parents are not perceived as thinking it is “**very wrong**”, then the student is at increased risk of participating in the undesirable behavior. “Antisocial Behavior” refers to stealing something worth more than \$5, drawing graffiti, and picking a fight with someone. ”Drug use” refers to the use of alcohol, cigarettes, and marijuana.

**Prevalence of Students "Protected" - Grade 12
DHHS Region 6: Penquis vs Maine, 2008**

	DHHS Region 6: Penquis			Maine			Sig Diff
	LCL	%	UCL	LCL	%	UCL	
Community Protective Factors							
Community Opportunities for Positive Involvement	37.1%	41.8%	46.5%	41.2%	42.4%	43.7%	
Community Rewards for Positive Involvement	43.5%	46.9%	50.2%	41.7%	43.0%	44.3%	
Family Protective Factors							
Family Attachment	54.2%	57.1%	60.0%	56.3%	57.4%	58.5%	
Family Opportunities for Positive Involvement	53.0%	55.2%	57.4%	53.0%	54.2%	55.3%	
Family Rewards for Positive Involvement	53.7%	55.7%	57.8%	54.1%	55.5%	56.9%	
School Protective Factors							
School Opportunities for Positive Involvement	62.7%	64.6%	66.5%	64.3%	65.6%	66.9%	
School Rewards for Positive Involvement	49.8%	52.4%	55.0%	51.3%	53.0%	54.6%	
Peer/Individual Protective Factors							
Social Skills	62.3%	64.6%	66.9%	60.8%	62.1%	63.4%	
Belief in the Moral Order	52.3%	56.0%	59.8%	51.9%	53.5%	55.0%	